

From: Graham Gibbens, Cabinet Member for Adult Social Care and Public Health
Meradin Peachey, Director of Public Health

To: Social Care and Public Health Cabinet Committee - 5th December 2013

Subject: Public Health Performance

Classification: Unrestricted

Summary: This report provides an overview of key performance indicators for Kent Public Health. Performance is currently varied across the prescribed/non prescribed data returns and 2 additional local performance indicators; performance has increased on NHS Health checks however targets are still not being achieved.

Due to national submission deadlines, National Child Measurement Programme and Smoking Cessation Services could not be updated for this report. Additionally national data collection for infant feeding prevalence has been temporarily suspended while NHS England, Public Health England, Department of Health and the Health and Social Care Information Centre assessed all the options of continued collation following the health system changes.

Recommendation(s): The Social Care and Public Health Cabinet Committee **is** asked to note this report.

1. Introduction

- 1.1 This report provides an overview of the key performance indicators for Kent Public Health. The report includes indicators on the new prescribed and non-prescribed data returns from Councils, Local key performance indicators and an indication of how these fit to the Public Health Outcomes Framework (PHOF)
- 1.2 The indicators for the National Child Measurement Programme (NCMP) and Smoking Cessation Services have not been updated from the previous report due to the timings of the national submission deadlines.
- 1.3 National data collection for infant feeding prevalence has been temporarily suspended while NHS England, Public Health England, Department of Health and the Health and Social Care Information Centre were assessing the options of continued collation following the health system changes; collation will re-commence for Q3 2013/14 and providers will be expected to submit all 3 quarters for 2013/14. NHS England have indicated that this information will be released in March 2014.

2. Bold Steps for Kent and Policy Framework

- 2.1 The work of the Public Health Division contributes to the Bold Steps for Kent as stated in the Business Plan:

- We will help **the Kent economy grow** by directing our revenue resources towards helping businesses in difficult times, procuring more of our goods and services from within the county wherever possible, encouraging growth and diversification of the market by supporting voluntary sector and encouraging social enterprise.
- We will look **to put the citizen in control** through the increasing localisation of services so that local communities can decide their priorities within the resource available. We will work through local arrangements, Joint Commissioning Groups and Health & Wellbeing Boards to ensure we are engaged with local agendas and understand and address local priorities
- We will help **to tackle disadvantage** by making the best use of resources available to target populations with poorer health outcomes – particularly for those in areas of deprivation or for vulnerable individuals who find it more difficult to access services. We will deliver **Kent's Health Inequalities** action plan and support districts and other partners to develop their own action plan addressing their geographical area or specific key functions – such as housing.

3 Performance Indicators

3.1 Summary of Key Performance Indicators

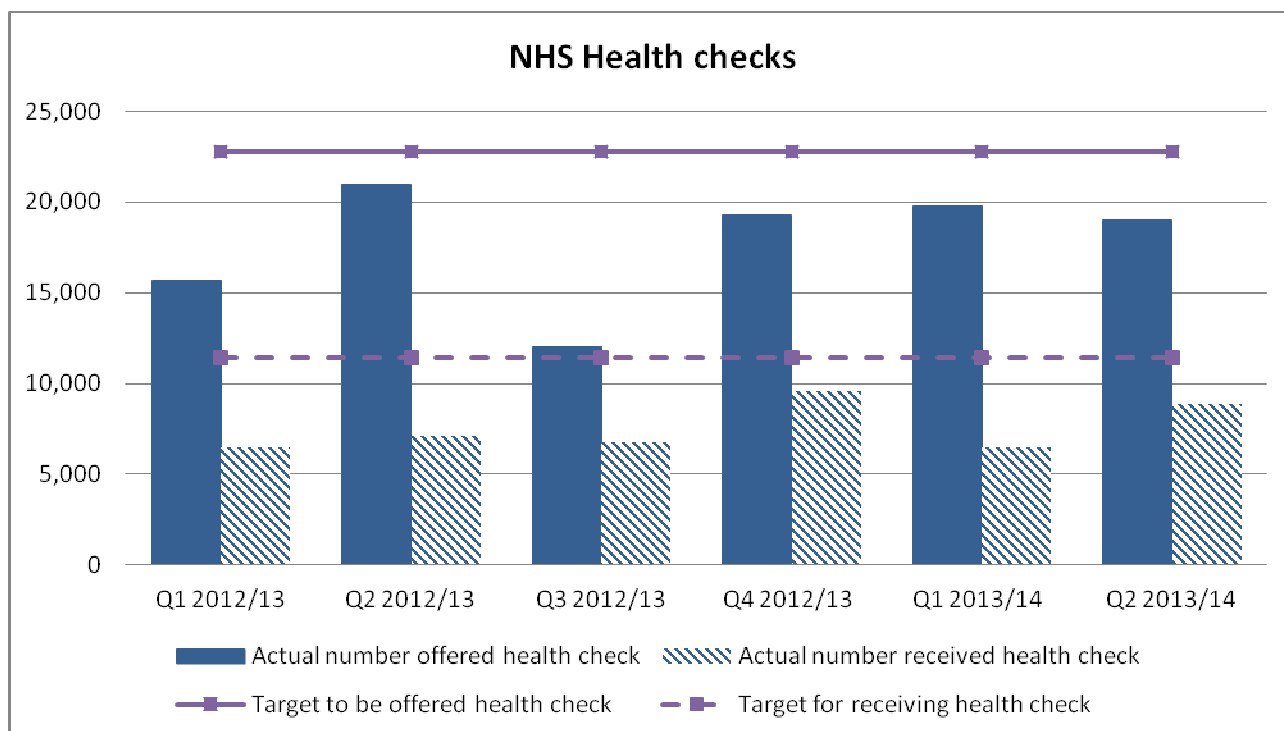
Indicator Description	Previous Status	Current Status	Direction of Travel
Prescribed and non-prescribed Data Returns			
NHS Health Checks - Proportion of target offers received a Health Check	Red (Q1 13/14)	Red (Q2 13/14)	↑
National Child Measurement Programme - Participation Reception year (Annual)	Green (2010/11)	Green (2011/12)	↔
National Child Measurement Programme - Participation Year 6 (Annual)	Green (2010/11)	Green (2011/12)	↑
Community Sexual Health Services – Proportion of clients accessing GUM offered an appointment to be seen within 48 hours	Green (Q4 12/13)	Green (Q1 13/14)	↓
Community Sexual Health Services – Chlamydia positivity rate per 100,000	Red (Q4 12/13)	Red (Q1 13/14)	↓
Stop Smoking Services – Number of people successfully quitting having set a quit date	Red (Q4 12/13)	Red (Q1 13/14)	↓
Local Indicators			
Infant Feeding – Proportion women breast feeding at 6-8 weeks	Amber (Q3 13/14)	Red (Q4 13/14)	See Section
Health Trainers – Proportion of new clients against target	Amber (Q1 13/14)	Green (Q2 13/14)	↑

Key to KPI Ratings used:

GREEN	Target has been achieved or exceeded the current National Performance
AMBER	Performance at acceptable level or no difference to the National Performance
RED	Performance is below a pre-defined Floor Standard * or is below National Performance
↑	Performance has improved relative to targets set or is moving in the right direction
↓	Performance has worsened relative to targets set or is moving in the wrong direction
↔	Performance has remained the same relative to targets set or previous performance

* Floor Standards are to be set during 2013/14 following the formation of the new Kent Public Health team in April 2013.

Data quality note: Data included in this report is provisional and subject to later change. This data is categorised as management information.



Trend Data – by quarter	2012/13				2013/14		
	Q2 (Jul-Sep)	Q3 (Oct-Dec)	Q4 (Jan-Mar)	Full 2012/13	Q1 (Apr-Jun)	Q2 (Jul-Sep)	Full 2013/14
Target Offers	22,810	22,810	22,811	91,241	22,810	22,810	91,241
Actual offers	20,982	12,033	19,292	67,992	19,761	18,996	38,757
Target receive	11,405	11,405	11,406	45,621	11,405	11,405	45,621
Actual receive	7,111	6,705	9,569	29,845	6,455	8,836	15,291
% of target offers received	31.2%	29.4%	42.0%	32.7%	28.3%	38.7%	16.8%
RAG Rating	Red	Red	Amber	Red	Red	Red	-
National %	37.4%	40.5%	48.2%	40.4%	37.4%	-	-

Commentary

Whilst there was a decrease in the number of invites sent during Quarter 2 compared to the previous quarter; there has been a positive increase in the number of residents taking up the NHS Health check when compared to the previous quarter and the same time period last year.

During the recent quarterly Performance Monitoring meeting, the commissioned provider has indicated an expected increase of activity in Quarter 3 with a planned large sweep of invites being sent out, in turn this should have a positive increase in the number of NHS Health checks received in the subsequent quarters.

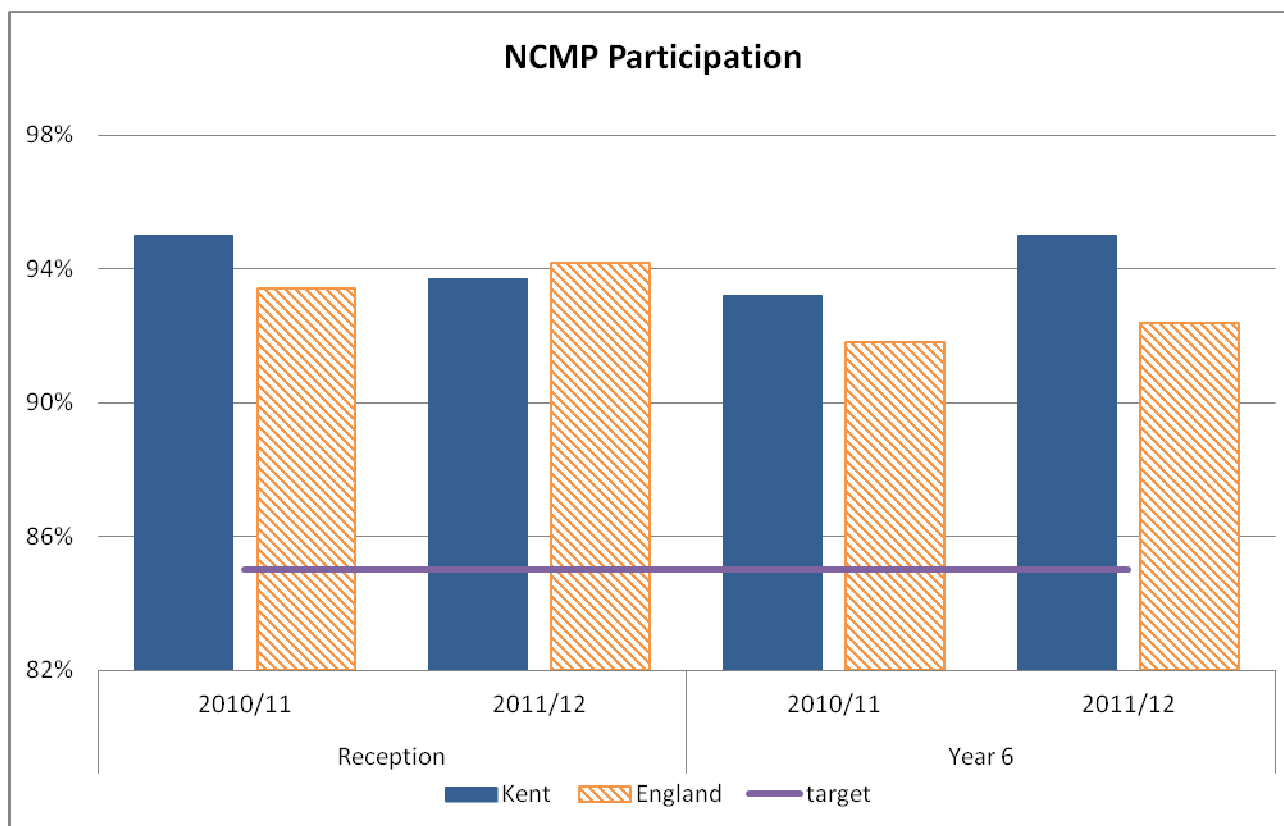
A financial system has been introduced to ensure that KCC will pay for activity not in a block contract. KCHT are clear that KCC wish to see significant improvement in this target. Kent Public Health will be reviewing the quarterly target allocation based on known localised and seasonality trends. This will provide more localised context to a National Programme.

Health checks are the Public Health Outcomes Framework Indicators 2.22i and 2.22ii.

Data Notes: Higher values and percentages are better. Source: KCHT. Indicator Reference: PH/AH/01

NCMP: Participation in the Annual National Child Measurement Programme

GREEN ⇄



Trend Data – Annual	2010/11		2010/11 – England		2011/12		2011/12 - England	
	Reception	Yr 6	Reception	Yr 6	Reception	Yr 6	Reception	Yr 6
Participation	95.0%	93.2%	93.4%	91.8%	93.7%	95.0%	94.2%	92.4%
RAG Participation	Green	Green	Green	Green	Green	Green	Green	Green
% reported Obese	8.9%	18.4%	9.4%	19.0%	8.6%	18.3%	9.5%	19.2%

Commentary

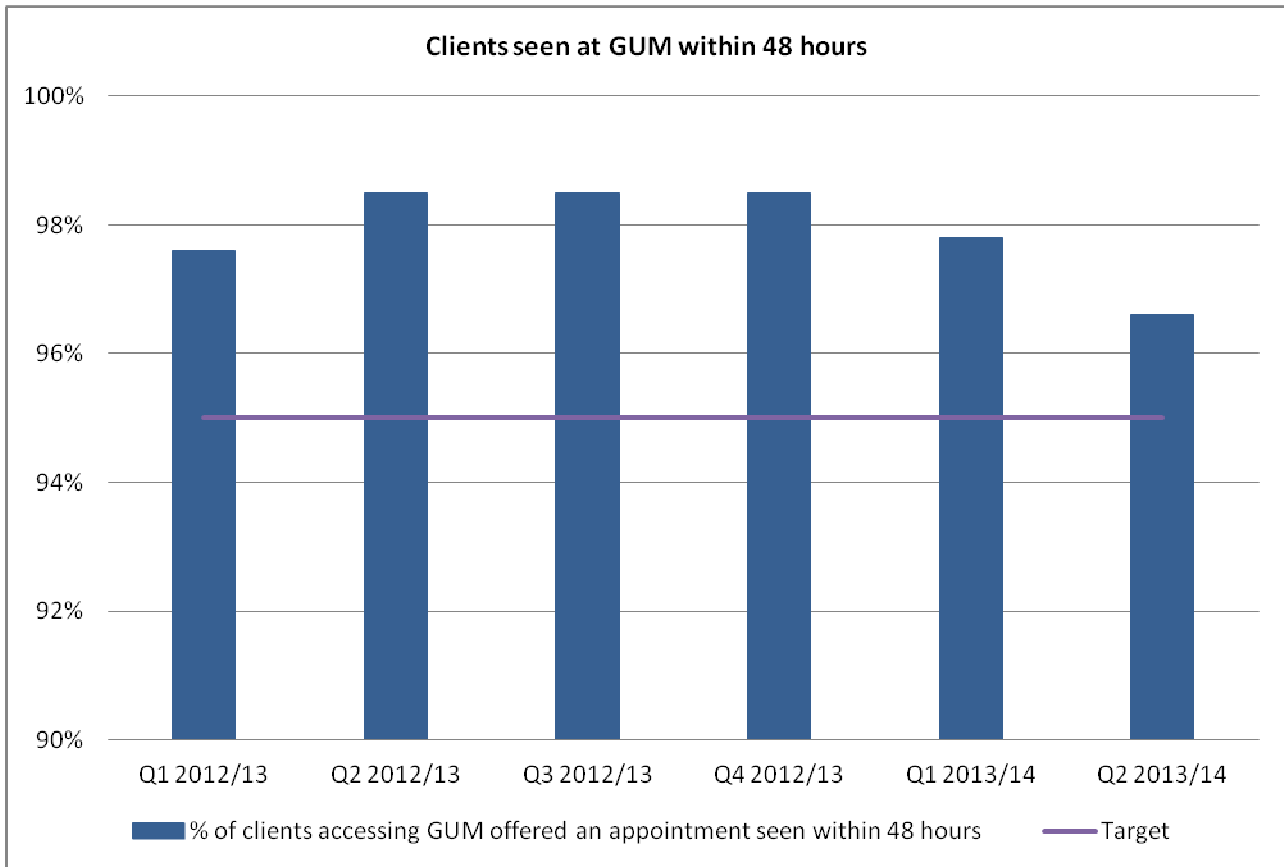
The target is to measure a minimum of 85% of eligible children in the two cohorts. 2012/13 School year data scheduled to be published in December 2013.

The NCMP relates to Public Health Outcome Framework Indicators 2.06i and 2.06ii

Data Notes: Higher values are better for Participation. Obesity lower values are preferred. Performance assessment for this indicator is based on the participation rate. Obesity for children is defined as being above the 95th percentile on the Body Mass Index, based on the weight distributions recorded between 1963 and 1994. Data includes state maintained schools only is based on schools location, not pupil address. Data Source: HSCIC. Indicator reference: PH/CYP/01

Community Sexual Health Services : Proportion of clients accessing GUM offered an appointment seen within 48 hours

Green ↓



Trend Data –by Quarter	Target	2012/13				2013/14	
		Q1 (Apr -Jun)	Q2 (Jul-Sep)	Q3 (Oct-Dec)	Q4 (Jan-Mar)	Q1 (Apr -Jun)	Q2 (Jul-Sep)
% offered an appointment seen within 48 hours	95%	97.6%	98.5%	98.5%	98.5%	97.8%	96.6%
RAG Rating	-	Green	Green	Green	Green	Green	Green

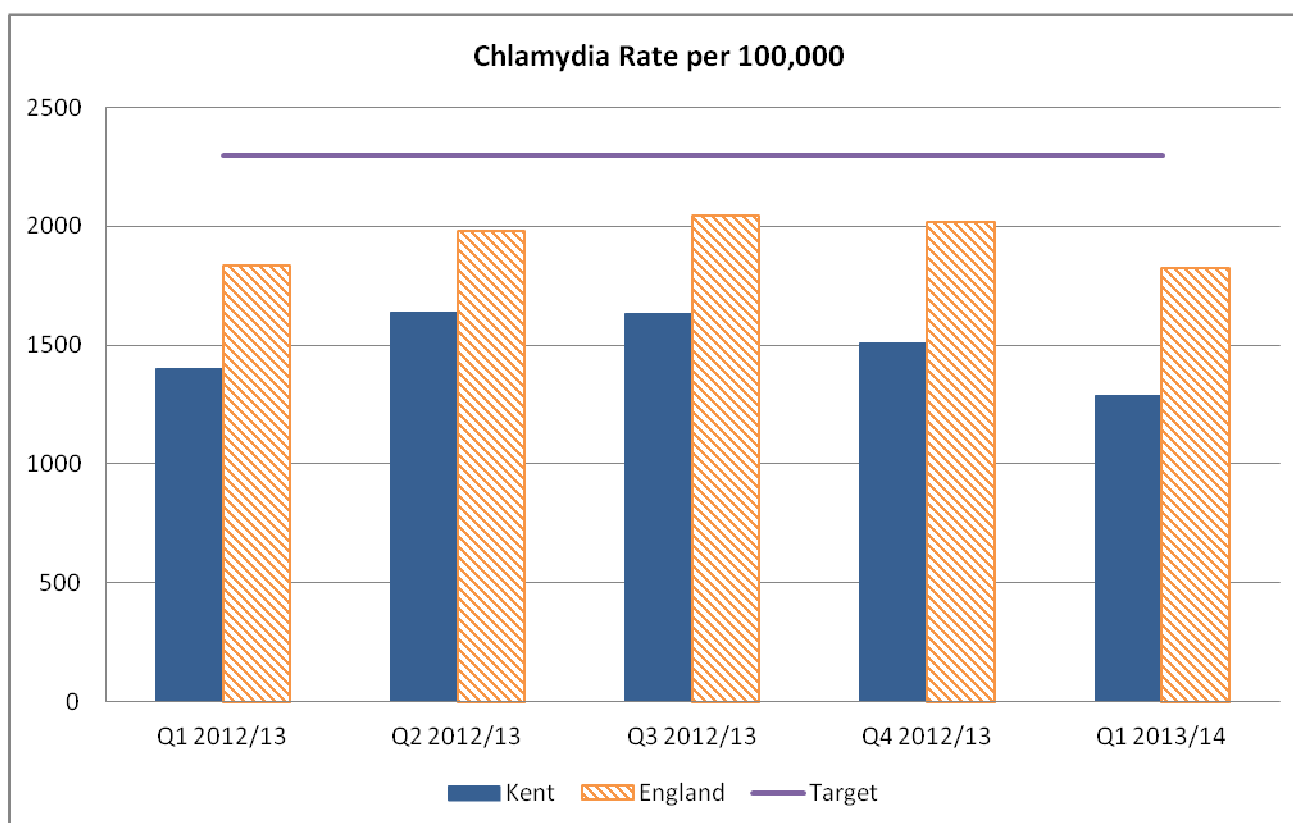
Commentary

GUM (Genitourinary Medicine) clinics in Kent consistently offer the majority of clients an appointment within 48 hours, performing above the high target of 95%.

This indicator is being monitored in quarterly performance monitoring meetings with the commissioned providers

GUM figures are not reported Nationally; therefore we are unable to make comparisons.

Data Notes: Higher values are better. Data source: Provider. Indicator Reference: PH/SH/01



Trend Data –by Quarter	Target	2012/13				2013/14
		Q1 (Apr -Jun)	Q2 (Jul-Sep)	Q3 (Oct-Dec)	Q4 (Jan-Mar)	Q1 (Apr -Jun)
Chlamydia Screening Uptake	35%	10,118	11,180	10,269	9,268	8,229
Positive tests reported	7%	644 6.4%	753 6.7%	750 7.3%	693 7.5%	592 7.2%
Chlamydia rate per 100,000	2,300	1,401	1,638	1,631	1,507	1,288
RAG Rating of Positivity Rate	-	Red	Red	Red	Red	Red
England rate per 100,000	2,300	1,830	1,980	2,040	2,016	1,821

Commentary

There were decreases for Kent in all aspects of this indicator; lower numbers of screenings were undertaken, there were lower numbers of positive tests, with a decrease in the rate per 100,000; these were the lowest measures compared to the previous 4 reported quarters. This decrease in the rate per 100,000 is mirrored in the national rate, which experienced a similar decrease.

In the recent quarterly performance monitoring meetings, the significant concern was discussed about the performance of this. The provider has implemented an action plan to remedy the performance direction and this will be monitored by Public Health.

The target population in Kent of people aged 15 – 24 years old is 183,899. To meet the National target of 2,300 per 100,000 Kent would need 4229.68 positive diagnoses; using the NCSP calculator tool there would need to be population coverage of 32.9% equalling 60,424 tests.

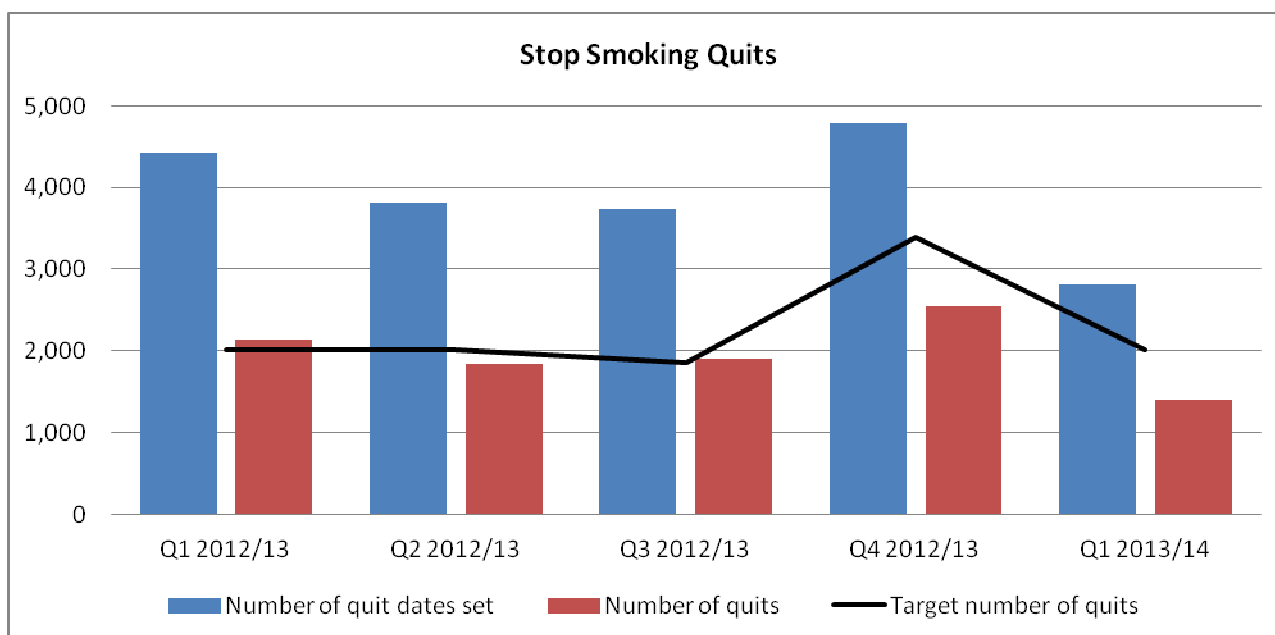
The sexual health service has been put out to tender in November 2013.

Chlamydia Diagnoses is Public Health Outcome Framework Indicator 3.02

Data Notes: Higher values are better. Data Source: NCSP CTAD. Indicator Reference: PH/SH/02

Stop Smoking Services

RED ↓



Trend Data – quarter end	2012/13				2013/14
	Q2 (Jul–Sep)	Q3 (Oct–Dec)	Q4 (Jan–Mar)	Full 2012/13	Q1 (Apr–Mar)
Number of quit dates set	3,817	3,730	4,787	16,758	2,809
Target number of quits	2,007	1,849	3,386	9,249	2,007
Number of quits	1,842	1,899	2,541	8,412	1,401
Proportion of target quitting	91.8%	102.7%	75%	90.9%	69.8%
RAG Rating	Amber	Green	Red	Amber	Red

Commentary

The Quarter 2 Department of Health submission is not due till 9th December therefore the updated figures will be in the next report.

Following performance monitoring meetings with the provider, the expectation is that the indicator will remain Red and the target will not be met. Smoking Cessation services are also currently under review with differing service deliveries being considered

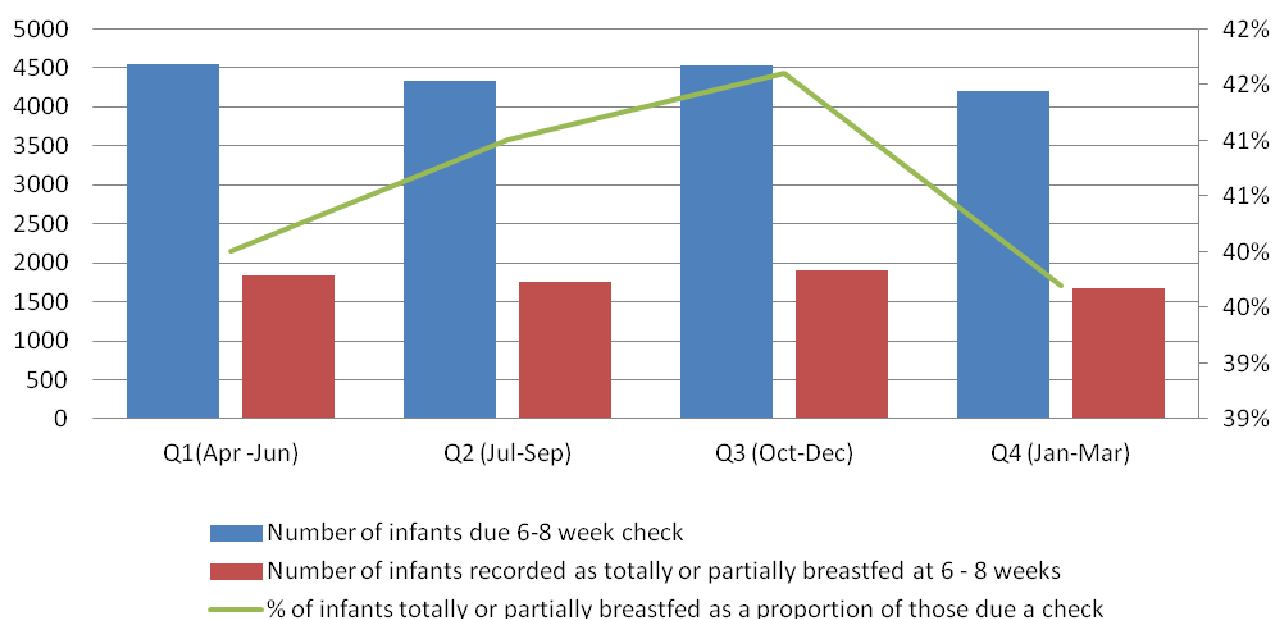
The consultant responsible for Smoking Cessation is currently investigating target rationale.

Data Notes: Data Source: Department of Health Data return by KCHT. Indicator reference: PH/AH/02

Breast Feeding - Proportion of women breast feeding at 6-8 weeks

Red ↓

Number and Proportion Breastfeeding at 6 - 8 weeks



	2012/13				
	Q1 (Apr -Jun)	Q2 (Jul-Sep)	Q3 (Oct-Dec)	Q4 (Jan-Mar)	Full 2012/13
Number of infants due 6-8 week check	4,555	4,336	4,531	4,200	17,622
Number of infants recorded as totally or partially breastfed at 6-8 weeks	1,833	1,754	1,897	1,671	7,155
% of infants totally or partially breastfed as a proportion of those due a check	40.2%	40.5%	41.9%	39.8%	40.6%
RAG Rating (46%)	Amber	Amber	Amber	Red	Amber
National (where available)	47.1%	47.5%	47.4%	46.6%	47.2%

Commentary

Department of Health and Public Health England temporarily suspended the data collection of this indicator; these will recommence at the Q3 submission where all 3 quarters of 2013/14 will be collected simultaneously. It is indicated that these figures will be published in March 2014.

Public Health Kent will be taking this opportunity to implement a number of measures focusing on data flow systems with both the GP's and the Child Health Information system (CHIS) which collates the information; the aim of which is to ensure both high completion and quality levels.

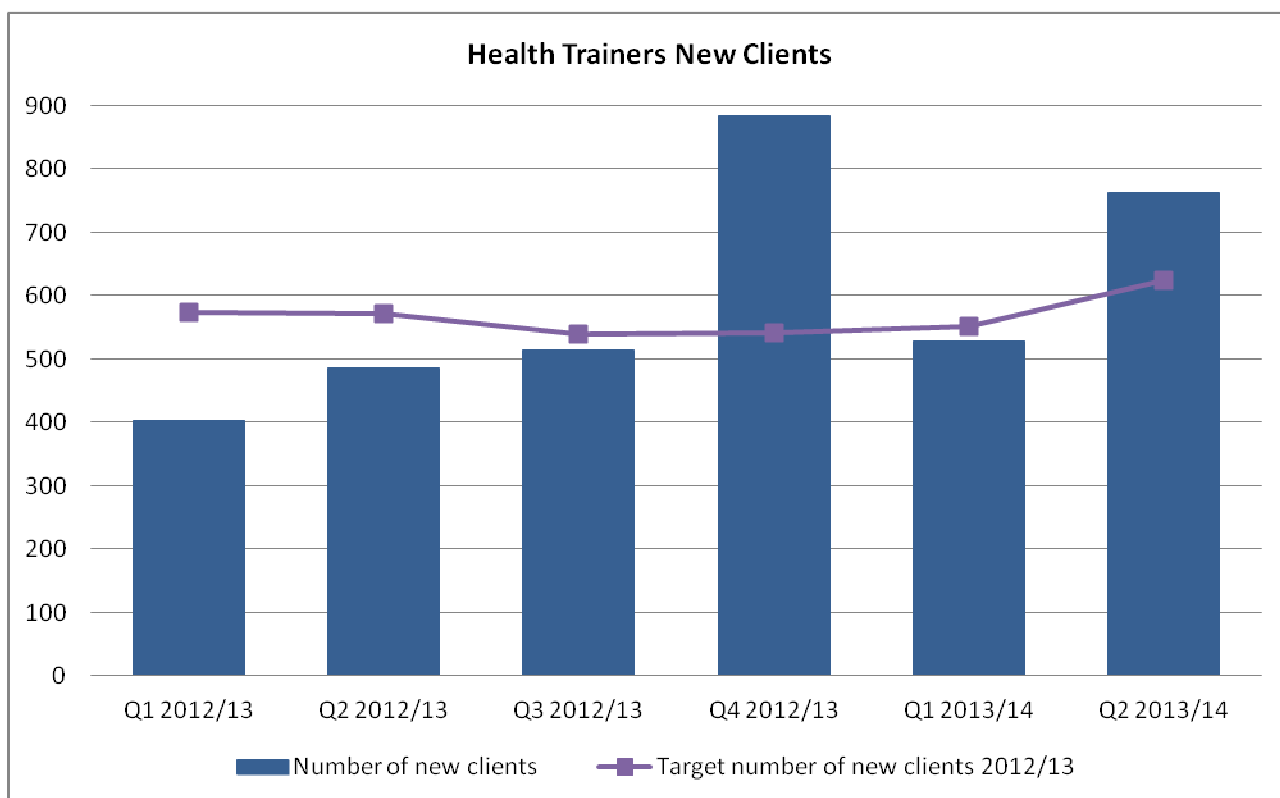
Public health is reviewing with Children's Centre colleagues the provision of infant feeding services across the County with the aim of recommissioning in the new year.

Breastfeeding prevalence is Public Health Outcome Framework Indicator 2.02i

Data Notes: Source: DH Integrated Performance Measure. Indicator Reference PH/AH/03

Health Trainers – proportion of new clients

Green ↑



Trend Data – year to date	2012/13					2013/14	
	Q1	Q2	Q3	Q4	Full year	Q1 (Apr -Jun)	Q2 (Jul-Sep)
Number of new clients	402	486	513	883	2284	528	763
Target number of new clients	574	572	540	541	2227	552	625
% of new client compared to target	70%	85%	95%	163%	103%	95.7%	122.1%
RAG Rating	Red	Amber	Green	Green	Green	Amber	Green

Commentary

Performance is positive against target for this service. Targets will be reviewed in light of new investment into the service to ensure full geographical coverage across the County, particularly where there has been historic underinvestment in the west.

Data Notes: Source KCHT. Indicator Reference PH/AH/04

4. Conclusions

- 4.1 Indicators for NHS Health Checks and Health Trainers are showing a positive direction of travel; however there are still on-going performance concerns with NHS Health checks and Chlamydia Positivity rates in regards to achieving targets. These will continue to be addressed with commissioned providers in regular performance monitoring meetings.

5. Recommendation(s)

Recommendation(s): The Social Care and Public Health Cabinet Committee is asked to note the performance report
--

6. Background Documents

- 6.1 None

7. Contact details

Report Author

- Karen Sharp: Head of Public Health Commissioning
- 0300 333 6497
- Karen.sharp@kent.gov.uk

Relevant Director:

- Meradin Peachey
- 0300 333 5214
- Meradin.peachey@kent.gov.uk